



DEEP CLEAN SURFACES QUICKLY, WITH EASE AND LESS WATER

High pressure water from hydraulics

Street washing unit is a powerful hydraulic accessory. It utilises a Dynaset hydraulic high pressure water pump, which transforms the hydraulic power of a work machine into high pressure water. Massive water power can be achieved with very small amount of water, thanks to high pressure.

Economically unbeatable

Compact size, light weight and low water consumption make the street washing unit a cost-saving and work efficient solution. The hydraulic high pressure water pump is free of rotating parts, which makes it very durable.

Deep clean surfaces in record time

Unlike when rinsing surfaces with low pressure water, high pressure water digs dust and sand out from the pores in asphalt, concrete, etc. This way the surface will not emit dust after drying. Thanks to low water consumption, the surface dries up quickly and the surroundings will not be flooded.

Versatility of use

Street washing units raise the degree of work machine's versatility. They are available for many different carriers and purposes. This guarantees optimal usability and best possible results.

DYNASET
POWERED BY HYDRAULICS

HIGH PRESSURE STREET WASHING EQUIPMENT

Street washing units, developed and manufactured by Dynaset Oy, are suitable for most vehicles used in maintenance work.

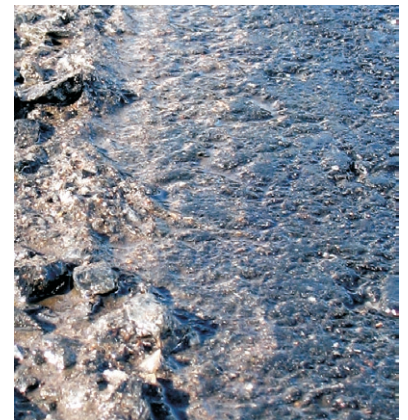
The heart of the street washing unit is patented hydraulic high pressure water pump, that runs with the hydraulic power provided by the carrier machine hydraulic system. The system's enormous power is based on high pressure water generated by the high pressure water pump, further intensified by the use of special nozzles.

High pressure water jets function like a blade, pushing mud and even larger particles to desired direction. Thanks to high pressure, the water consumption stays very low. After washing the surface dries up quickly. The surface also become deep clean, and it will not emit dust after drying.

Small water consumption also makes it possible to wash large areas effectively even with a small vehicle. Water consumption stays under 1l/m² when using pressure between 90 and 200 bar. This in turn grants more savings, as work time can be used for profitable work instead of frequent tank refilling trips.

The turning nozzle pipe has a support wheel and is in total control of the driver. It enables easy and reliable operation even in difficult projects.

With washing pistol, included in a mobile washing unit, apartment entrances, corners and other tight spaces can be cleaned effectively and easily. Statues, park benches, road signs etc can also be washed without prior arrangements.



High pressure street washing unit is a useful accessory for most vehicles used in maintenance. It pushes solid matter such as sand, rocks etc. on the surface to desired direction in a controlled manner.

High pressure water deep cleans the surface. It will not emit dust after drying. Due to small water consumption, the surface dries up quickly and the surroundings are not flooded.

Street Washing Unit	Washing Power			Water Tank Volume liters	Carrier Machine Recommended Carrier type	Weight kg	Hydraulic Requirements	
	Delivery max l/min	Pressure max bar	Working Width meters				Minimum flow l/min	Maximum pressure bar
KPL 270-200-1250x8	30	200	1,5	270	Light Municipal Vehicle	80	45	210
KPL 600-200-1250x8	30	200	1,5	550	Skid Steer Loader	190	45	210
KPL 950-200-1650x9	30	200	1,8	950	Maintenance/Multipurpose Vehicle	260	45	210
KPL 950-220-1850x9	50	220	2,0	950	Maintenance/Multipurpose Vehicle	260	70	210
KPL 1200-220-1850x9 *	50	220	2,0	1200	Wheel Loader	380	70	210
KPL 1200-180-2200x10 *	90	180	2,5	1200	Wheel Loader	380	115	210
KPL 200-1650x9	30	200	1,8	-	Multipurpose Vehicle		45	210
KPL 220-1850x9	50	220	2,0	-	Multipurpose Vehicle		70	210
KPL 180-2200x10	90	180	2,0	-	Multipurpose Vehicle		115	210
KPL TRUCK 90-2200-x11	150	90	2,5	-	Road Maintenance Truck		85	210
KPL TRUCK 180-2200x10	90	180	2,5	-	Road Maintenance Truck		115	210
KPL PICK-UP 1000-200-1650x9	30	200	1,8	1000	Pick-Up/Van	80	45	210

Quick attachment adapter included in all models, except in models marked with * as an option.

