

# HPW HYDRAULIC HIGH PRESSURE WATER PUMP



The hydraulic high pressure water pump is compact and because of its great water power, it is incredibly versatile. It can be used in water cutting, hydro scaling, street cleaning, and numerous other purposes.

## VERSATILE WATER POWER IN A COMPACT PACKAGE

### High Pressure Water from Hydraulics

The Dynaset hydraulic high pressure water pump transforms the hydraulic power of a work machine effectively into high pressure water power. Because of high pressure, the pump gives great water power with a small amount of water. The easy to use pump is self sucking, requiring no feeding pressure.

### Low Cost Usage

Small size, light weight, durable construction and low water consumption make the hydraulic high pressure water pump very cost effective.

### Durable, Compact and Easy to Use

The patented design of the pump is completely free of rotating parts. Compared to other pumps of the same power, the HPW pump is only a fraction in size. It can be installed practically in any space in the work machine. The power and size range of pumps available covers all needs.

### Ultimate Versatility

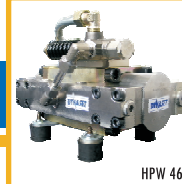
The HPW pump is an excellent tool in daily cleaning work and other jobs where reliable high pressure water is needed. It is also powerful enough for industrial applications.

**DYNASET**  
POWERED BY HYDRAULICS

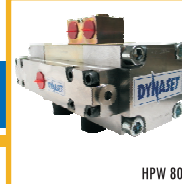
# HYDRAULIC HIGH PRESSURE WATER PUMP



HPW 200



HPW 460



HPW 800

The hydraulic high pressure water pump (HPW) transforms hydraulic power into pressure and flow of liquid. The patented design of the pump is based on hydraulic piston - water piston principle. This grants very small size, without sacrificing any of the power: the pump can be used to cut metal or demolish concrete. The pump contains no rotating parts. This makes it very durable and easy to maintain.

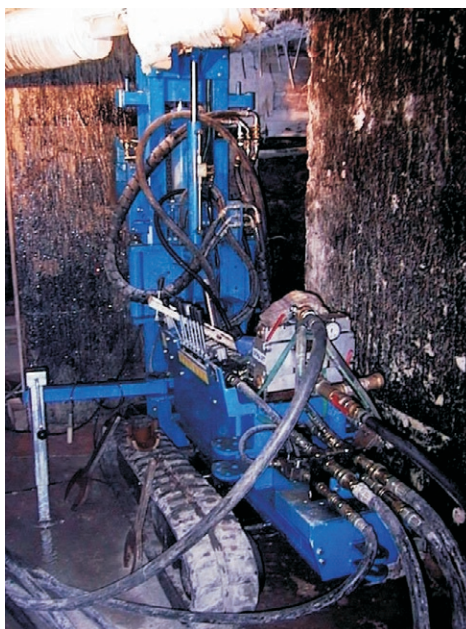
Thanks to the advanced construction and material selections, dry running does not damage the pump. The pump is self bleeding.

The pumped liquid (water or other fluid) can be taken from open source, tank or pressurised container.

The core use of hydraulic high pressure water pumps is in the field of various mobile washing applications, such as cleaning real estate, work machinery at the work site, etc. Other applications and accessories boosting work efficiency are:

- Street washing equipment
- Pipe cleaning equipment
- Dust suppression
- High pressure fire extinguishing
- Injector pump
- Drilling fluid pump
- Water sand blasting injector
- High pressure water heater

There are many high quality accessories available for high pressure pumps. Nozzles, washing pistols, filters etc. greatly expand the range of possible uses of the pump. With these accessories, the work becomes more efficient, easier and quicker - with less effort.



▲ High pressure pipe cleaning system enables long pipelines to be cleaned easily and effectively. Clogged and frozen pipes are no problem, as special nozzles and hot water can be used for cleaning.

▼ The high pressure dust suppression system controls emitting dust in demolition, recycling, screening etc. The air is cleared with atomized high pressure mist sprayed.

▲ High pressure fire extinguishing is very powerful and also helps minimise the damages to property caused by flooding.

← Drilling fluid pumps (HDF) are used in drilling. They are very powerful and have great resistance for wearing when using fluids containing abrasive particles.

High Pressure Pump	Water Power			Pressure Ratio Water/ Hydraulics	Dimensions			Weight kg	Hydraulic Requirements	
	Flow l/min	Pressure bar	Power kW		Width mm	Height mm	Length mm		Maximum Flow l/min	Maximum Pressure bar
HPW 200/30-45	30	200	10	1,18	160	190	243	8	45	210
HPW 420/20-50	20	420	14	2,12	150	200	250	16	50	220
HPW 220/50-70	50	220	18	1,26	221	210	325	25	70	210
HPW 520/30-85	30	520	26	2,62	175	210	285	22	85	210
HPW 90/150-85	150	90	23	0,52	235	270	360	30	85	210
HPW 180/90-115	90	180	27	1,12	266	180	325	28	115	210
HPW 460/50-115	50	460	39	2,03	250	230	325	26	115	250
HPW 130/180-140	180	130	39	0,68	259	174	410	35	140	250
HPW 800/30-140	30	800	40	4,00	200	205	315	58	140	210
HPW 300/300-350	300	300	150	1,06	266	355	715	170	300	350
HPW 1600/15-130	15	1600	40	7,87	193	194	394	40	130	230

